

# OKYSOFT<sup>2</sup>

OKYWEB<sup>2</sup> EDITING SOFTWARE



hittrax/okyweb2

[www.okyweb.com](http://www.okyweb.com)



REFERENCE MANUAL

**M-LIVE s.r.l.**

Via Luciona, 1872/B

47842 S.Giovanni in Marignano (RN) - ITALY

Phone +39 0541 827 066 - Fax +39 0541 827 067

web: [www.m-live.com](http://www.m-live.com) - e-mail: [export@m-live.com](mailto:export@m-live.com)

**HitTrax MIDI Files**

PO Box 6090

Vermont South 3133

Vic, Australia

Ph/Fax: +613 9887 8127

web: [www.okyweb.com.au](http://www.okyweb.com.au) - e-mail: [info@okyweb.com.au](mailto:info@okyweb.com.au)

The information in this document has been carefully prepared and checked. Nevertheless, **M-LIVE s.r.l.** assumes no responsibility for any errors. The information in this document, as well as the specifications of the products it refers to, are subject to change without prior warning. **M-LIVE s.r.l.** assumes no responsibility for the use or application of the products described in this document. Unless otherwise stated, any reference to names, products, data, authors, publishers and companies is purely casual and for the sole purpose of explaining the use of **M-LIVE s.r.l.** products. Names, logos and trademarks appear herein belong to the respective proprietors. All rights are reserved and no part of this document can be reproduced in any form, in any way or for any reason without written permission from **M-LIVE s.r.l.**

All quoted brands belong to the companies that produced them.

© M-LIVE s.r.l. 2006

First edition 2006





**OkySoft2** is the software provided with **OkyWeb2** that allows you to easily use large libraries of songs and program various **OkyWeb2** functions more rapidly:

- ☞ **Saving** an unlimited number of songs on your Hard Disk.
- ☞ **Transferring** backing tracks to the **OkyWeb2** Compact Flash card.
- ☞ Programming **Playlists**.
- ☞ Connecting to the **OkyWeb2** Web site to download backing tracks from the library.
- ☞ Transforming Standard MIDI Files into **MF5** files.
- ☞ Handling **MF5** files.
- ☞ Editing and transferring **EQ/EFX** presets.
- ☞ Updating the **OkyWeb2** operating system online.
- ☞ **Playing** backing tracks saved on the PC using the PC's MIDI player or **OkyWeb2** directly.

## Contents

<b>Installation .....</b>	<b>4</b>
Minimum computer requirements .....	4
Easy installation .....	4
Updates .....	4
<b>Connecting OkyWeb2 to a PC .....</b>	<b>5</b>
Status LED .....	5
<b>OkySoft2's two windows .....</b>	<b>6</b>
Download Folder .....	6
Importing songs to the Download folder .....	6
<b>Transferring songs between PC and Compact Flash cards .....</b>	<b>7</b>
<b>Playlist .....</b>	<b>8</b>
<b>MIDI Player .....</b>	<b>10</b>
Setting the default MIDI Player .....	10
Playing a song .....	10
<b>Updating OkyWeb2's operating system .....</b>	<b>11</b>
<b>Function Bar .....</b>	<b>12</b>
<b>Menu .....</b>	<b>13</b>
File Menu .....	13
Edit Menu .....	14
Tools Menu .....	15
Options Menu .....	16
? Menu .....	16
<b>Editors of the Processors and MIDI Mixer .....</b>	<b>17</b>
Common operating modes .....	17
<b>MIDI MIXER .....</b>	<b>19</b>
<b>MIC ECHO .....</b>	<b>20</b>
<b>MIC EQ / MUSIC EQ .....</b>	<b>21</b>
<b>CHORUS FX .....</b>	<b>22</b>
<b>REVERB FX .....</b>	<b>23</b>

## Installation

### Minimum computer requirements

- PC Pentium II 300MHz (or equivalent)
- MS-Windows®: Win98SE/ME; 2K/XP (or later).  
N.B.: Win95 and Win98 are not supported, due to USB system compatibility limits.
- 1 free USB port (version 1.1 or later).  
N.B.: USB hubs (devices able to handle several USB peripherals) can be used, providing they are powered models.  
It's advisable to avoid using passive (un-powered) hubs or USB splitters.

### Easy installation

**IMPORTANT: install OkySoft2 before connecting OkyWeb2 to your computer.**

For problem-free installation, proceed as follows:

- ☞ Click here to visit the OkyWeb2 web site and download OkySoft2 operating software or type: <http://www.okyweb.com.au/updates/okysoft2.zip> in your browser to go direct to the download screen. When downloading the software, it is safe to ignore any warnings, including virus warnings. The alerts are standard Windows® warnings and do not apply with authorised software.

**IMPORTANT:** Ensure the OkyWeb2 'is not' attached to the USB port while setting up the software. The unit is connected to the USB port after the software is installed during the second phase of installation (Hardware Wizard)

- ☞ Once downloaded, double click on SETUP.EXE.
- ☞ Follow the step-by-step instructions that appear on your PC's monitor. At the end, you'll be asked to reboot your computer.
- ☞ After rebooting, you can start using the program.

#### **NOTE in the "Windows Logo" test with XP**

During this procedure, Windows XP® will warn that the software/driver being installed is not part of the "Windows Logo" program.

No Problem! Proceed by clicking on Continue and complete the installation.

### Updates

For its very nature, software is constantly evolving, implementing new functions or improving those already existing.

If you have a Web connection, check periodically for the availability of updates and new releases of **OkySoft2**, of the **OkyWeb2** operating system and relative documentations and manuals.

You can click on the appropriate icon of **OkySoft2** or visit the [HitTrax/OkyWeb2](#) web site.

## Connecting OkyWeb2 to a PC

### **IMPORTANT: install OkySoft2 before connecting OkyWeb2 to your computer.**

N.B.: OkySoft2 must be installed before connecting the hardware (or enabling additional software), so that drivers and devices necessary for the correct use of OkyWeb2 are supplied to Windows®.

- ☞ After installing the software, connect the **OkyWeb2** Multiport to a USB port of your PC, using the Multiport/USB cable provided.

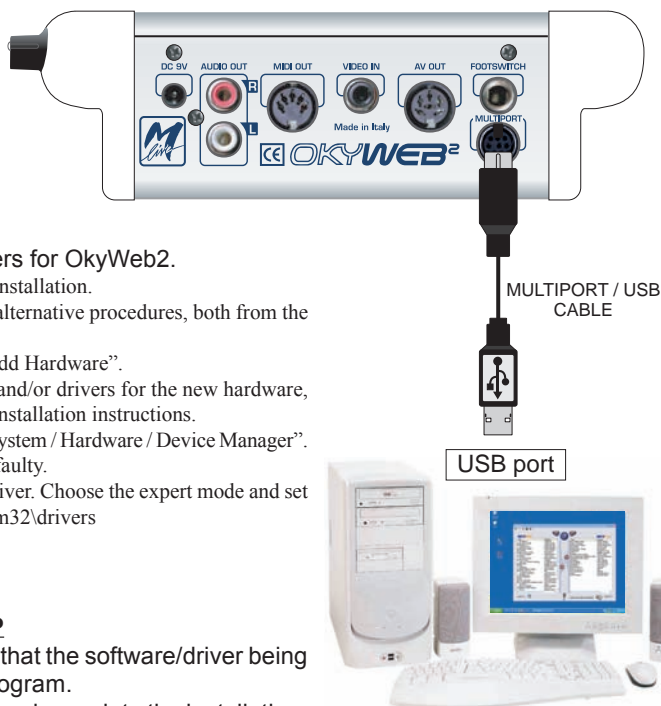
- ☞ Make certain **OkyWeb2** is switched on and in Stop status.

If installation procedure has been carried out correctly, Windows® will detect the presence of the new hardware and guide you step by step through automatic installation of the drivers for OkyWeb2.

Should this not be the case with your system, repeat the installation.

In the event of difficulties, you can carry out a couple of alternative procedures, both from the Windows® Control Panel:

- alternative 1): Follow "Printers and Other Hardware / Add Hardware".  
When your system prompts for software and/or drivers for the new hardware, insert the CD-Rom provided and follow installation instructions.
- alternative 2): Follow "Performance and Maintenance / System / Hardware / Device Manager".  
Select the USB device which appears as faulty.  
Right-click on it and choose to Update Driver. Choose the expert mode and set the following path: C:\WINDOWS\system32\drivers  
Then click Next and follow instructions.



### **NOTE in the "Windows Logo" test with XP**

During this procedure, Windows XP® will warn that the software/driver being installed is not part of the "Windows Logo" program.

No Problem! Proceed by clicking on Continue and complete the installation.

When the procedure is finished, Windows® will indicate that the new hardware is installed and ready for use.

- ☞ Start OkySoft2 by clicking on the program icon on the desktop.

If everything is OK, after an initial data exchange phase, the OkySoft2 STATUS LED turns green, showing that communication between OkySoft2 and **OkyWeb2** is enabled.



### **Status LED**

The Status LED indicates the status of communication between **OkySoft2** and **OkyWeb2**:

<b>green:</b>	connection available	- line free
<b>yellow:</b>	connection available	- <b>OkyWeb2</b> busy (e.g. song being played)
<b>red:</b>	no connection	/ line not accessible
<b>flashing red:</b>	connection available	- <b>OkyWeb2</b> has no Operating System (OkyWeb2 function Tools / Update OkyWeb2 Operating System must be run).



## OkkySoft2's two windows

After the data are uploaded, the program shows:

- in the top window: the list and number of the songs available in the PC's Download Folder;
- in the bottom window: the list and number of the songs contained in the **OkkyWeb2 Compact Flash** card (or in the Compact Flash card of a card drive - e.g. **M-Live OkkyWrite** - if connected).
- on the bottom border: free memory of the Compact Flash card  
the number of the song currently selected



## Download Folder

The program automatically creates a Download folder in the PC's Hard Disk, which becomes the reference folder for transferring songs from **OkkyWeb2** to the PC.

To create other folders, use standard Windows procedure.

To change the folder, you can use the "Select the Download Folder" function in the File menu.

In this way, you can organize your archive of backing tracks in more than one folder (for example to have the *images* of various Compact Flash cards at your disposal).

## Importing songs to the Download folder

Click on the icon  corresponding to the "Import from PC" and "Import from Floppy" functions in the File menu.

In the standard Windows® window that appears, look for the files you wish to import, then press Open.

Songs that can be imported are files in .MID (0 or 1), .KAR, .MF3 and MF5 format.

N.B.: remember that some MIDI Files on the market don't contain text data.

N.B.: during import procedure, **OkkySoft2** automatically converts the files, thus making them immediately transferable to **OkkyWeb2**.

Importing songs is also possible using the classic Drag & Drop method. In fact, it is sufficient to select the songs in other Windows® windows and drag them into the **OkkySoft2** window: the songs are automatically added to the list of songs available on the PC's Hard Disk (top window).

## Transferring songs between PC and Compact Flash cards

The transfer (or rather the copy) of songs between PC and Compact Flash cards is done in a very simple manner:

### Transferring songs from the PC to OkyWeb2

- In the Hard Disk window (top), select the songs you want to transfer.

N.B.: to select, use customary Windows<sup>®</sup> procedure.

then:

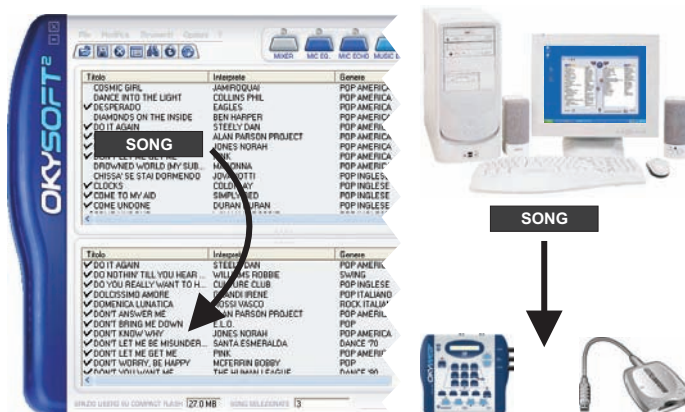
- Drag the songs into the Compact Flash card window (bottom);

or:

- in the File menu, select the "Transfer PC -> Compact Flash" function;

or:

- press the transfer key.



### Transferring songs from OkyWeb2 to PC

- In the Compact Flash Card window (bottom), select the songs you want to transfer.

N.B.: to select, use customary Windows<sup>®</sup> procedure.

then:

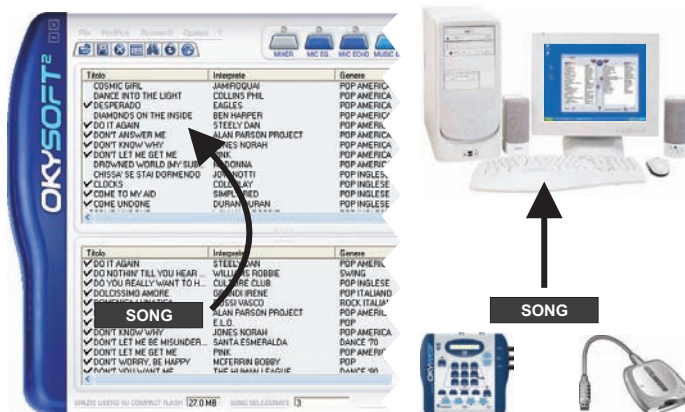
- Drag the songs into the Hard Disk window (top);

or:

- in the File menu, select the "Transfer CompactFlash -> PC" function;

or:

- Press the transfer key.



## Playlist

**OkkySoft2** enormously simplifies **OkkyWeb2** Playlist programming. The Playlists are displayed in the appropriate window and it's sufficient to drag the Titles of the songs to add or remove to/from the list or change playing order.

**IMPORTANT:** **OkkySoft2** handles the Playlists of a specific Compact Flash card, i.e. the Compact Flash card connected to the computer by means of **OkkyWeb2** (or via the card drive - e.g. **M-Live OkkyWrite**).

When creating Playlists, the program uses the Songs contained in the connected Compact Flash card.

This also means that if no Compact Flash card is connected to the computer, the Playlist function isn't operational.

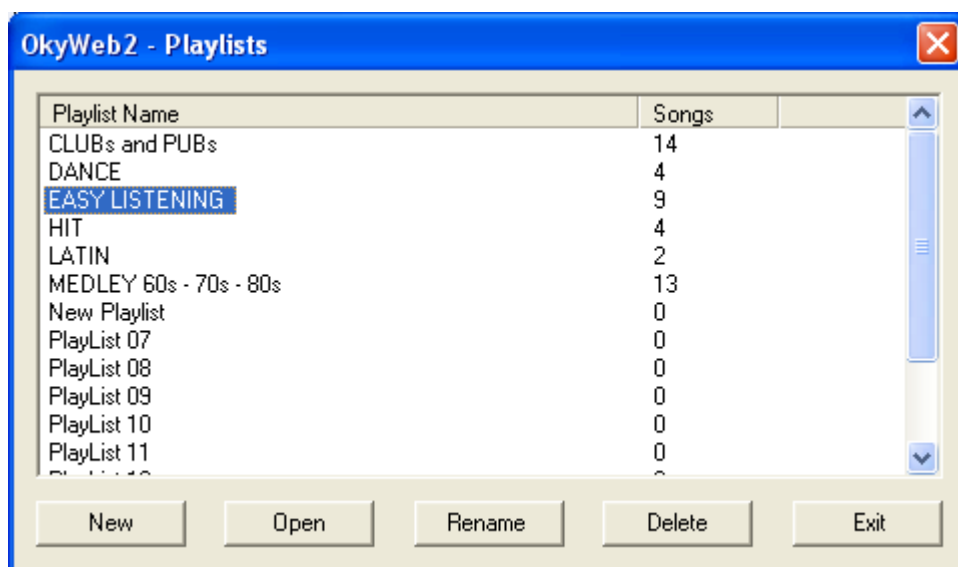
N.B.: remember that the connection of a Compact Flash card is necessary for the correct operation of **OkkyWeb2**.

Each Compact Flash card can contain up to 16 Playlists.

### Enabling the Playlist function

Click on the Playlist key  or select the "Playlist" function in the Tools menu.

The Playlist List window appears with the relative functions:



- New** Creates a new Playlist.  
The name "New Playlist" is assigned in default by **OkkySoft2**. It is already selected and can be immediately edited. If you wish, key in the new name and press Enter or click anywhere on the screen.
- Open** Opens the Edit window of the selected Playlist.  
Select a Playlist and click Open.  
A quicker method to access Playlist editing is to double click on the name.
- Rename** Allows to change the name of the selected Playlist.  
Select a Playlist and click on Rename: the name is highlighted and becomes editable.  
Key in the new name and press Enter or click anywhere on the screen.
- Delete** Deletes the selected Playlist.  
Select a Playlist and click on Delete: a confirmation prompt allows you to confirm or annul Playlist deletion, safeguarding you from any accidental mistakes.  
N.B.: the deletion of the Playlist obviously only regards the playback list, not the songs listed in it.
- Exit** Exits from the Playlist function and returns to the main **OkkySoft2** window.



## Editing the Playlist

Selecting a Playlist and clicking on Open or double clicking on the name of a Playlist, you can access Playlist Editing.

In the top part, the Edit window contains the list of all the Songs contained on the Card, and in the bottom part the list of the Songs contained in the selected Playlist.

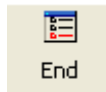
**To add a Song** click on the name in the top list and drag it into the bottom window where required.

**To change the position of a Song already in the list,** click on its name and drag it to the required place.

**To add a Song at the beginning of the Playlist** select it and click on Beginning.



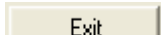
**To add a Song at the end of the Playlist** select it and click on End.

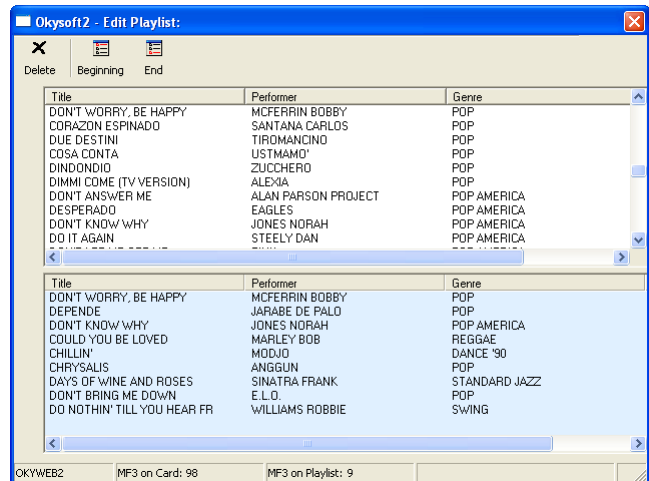


**To delete a Song from the Playlist** select it and click on Delete.



**To exit the Playlist Edit window**

Click on Exit  or simply close the window with customary Windows® procedure.



## MIDI Player



Player Controls.

The **Play** and **Stop** keys allow to start and stop song playback, enabling you to listen to the songs contained in the OkySoft2 Download folder, as well as those contained in the Compact Flash card.

### Setting the default MIDI Player

You can choose your favourite device by means of the Tools / MIDI Player Setting function.

As a player, you can use Windows®' default MIDI Player (in other words the device that uses the sounds of your PC's audio card or that of the MIDI peripheral connected to it) or use **OkyWeb2** directly.

Using **OkyWeb2**, you will obviously obtain excellent results, as you will exploit its sound qualities and specific performance.

Clicking on Set, you can access the Windows®' Sounds and Audio Devices Properties window, in which the PC's MIDI Player can be set.

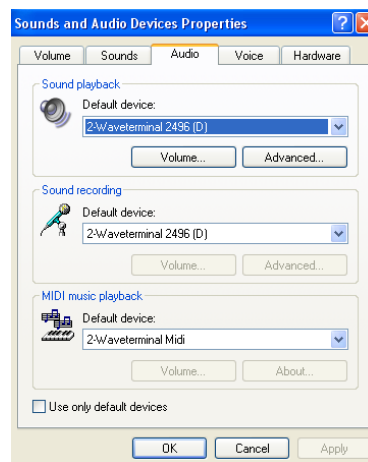


### Playing back songs in MF5 format

Songs in proprietary **MF5** format are complete with:

- 32 music tracks
- extra tracks for processing vocals
- *dedicated* sounds (i.e. specific to **OkyWeb2**), which can vary from song to song
- lyrics
- info
- other data and *dedicated* settings

Therefore, the songs in **MF5** format can only be played by setting **OkyWeb2** as **OkySoft2's** preferred MIDI Player.



### Playing a song

1. Select the required song.
  2. Click on **Play** to start playback and **Stop** to stop it.
- The MIDI Player's controls are also accessible using the Tools / Play – Stop menu.

## Updating OkyWeb2's operating system

Updating the **OkyWeb2** Operating System is normally carried out via Internet and in a highly automated manner. In fact, it's sufficient to connect **OkyWeb2** to the computer and enable the "Tools / Update OkyWeb2 Operating System" function:

### If you have an Internet connection

**OkySoft2** carries out connection, download and update completely automatically, allowing you to easily obtain the most recent version of the Operating System.

Should this not be the case with your system, you can proceed by manually connecting to the **HitTrax/OkyWeb2** web site ([www.okyweb.com.au](http://www.okyweb.com.au)), where you can download updates and new releases of **OkySoft2**, **OkyWeb2** operating system and relative documentations and manuals.

### If you don't have access to Internet

you can use an Update Floppy Disk or CD.

In this case, **OkySoft2** (after checking that there is no Internet connection) suggests you search for the **OKYWEB2.MHX** file in your PC: all you have to do is confirm, insert the Floppy Disk or CD and access its contents with customary Windows® procedure. (For example: select <Floppy Disk A:\> or <CD-Rom D:\>, highlight the file **OKYWEB2.MHX** and click on <OK>).

Contact **HitTrax** on +613 9887 8127 (phone/fax) and we will arrange for a CD to be sent by mail.

There is a nominal fee to cover materials and postage for this service. Our full contact details can be found at the end of this manual.

Wait for the procedure to be completed. In the event of accidental interruption, repeat the operation.

## Function Bar



The various keys of the bar allow to rapidly enable the most frequently used functions.  
The same functions are however available (along with others) by means of the various menus.



### Import from PC

Allows to transfer songs contained in other folders of the PC to the Download Folder.  
This function can also be enabled from the File / Import from PC menu.



### Import from Floppy

Allows to transfer songs contained on a Floppy Disk to the Download Folder.  
This function can also be enabled from the File / Import from Floppy menu.



### Delete Song

Deletes the songs selected.  
This function can also be enabled from the Edit / Delete Song menu.



### Playlist

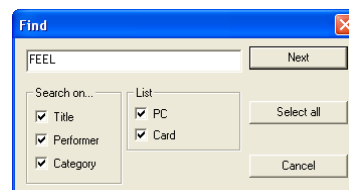
Allows to handle the song playlists.  
This function can also be enabled from the Tools / Playlist menu.



### Find

Enable a search among the available songs.  
When this function is enabled, the Find window appears, by means of which you can run searches by Title, Artist and/or Genre on the Hard Disk and the **OkyWeb2** Compact Flash card.

- ☞ Key in the Title, Artist or Genre to be found.
- ☞ Press **Enter**.
- ☞ Click on **Next** to select one song at a time, proceeding according to the order of the results of the search.
- ☞ Click on **Select all** to select all the songs that meet the search criteria.  
This function can also be enabled from the Edit / Find menu.



### Edit Info

Allows to display and edit the song's information.  
When you select this function, a window is enabled in which you can edit or enter the song's parameters: Title, Artist, Genre, Publisher and Composer.

Only the songs produced by **M-Live** and by **HitTrax** in the proprietary **MF3** and **MF5** formats contain the information on Artist and Genre used by **OkyWeb2** search functions.

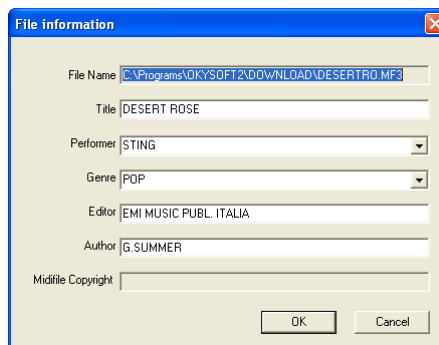
In all the other MIDI Files you import into **OkySoft2** folders, this information is entered manually using the Edit Info function.

To use Files with the sophisticated **OkyWeb2** search functions, Artist and Genre data must be entered.  
N.B.: you can freely edit the classification, particularly that of the Genre, to adapt it to your specific search criteria.

Moreover, the song Title can be written in its entirety. In this way, you can also edit the names of old generation MIDI Files, which are typically limited as far as the number of characters is concerned.

Artist and Genre parameters are set with a pull-down menu that allow you to choose from a vast archive already saved in **OkySoft2**. In this way, these parameters will always be inserted with the same format, making search procedure more precise and effective.

The function can also be enabled from the Edit / Edit Info menu, or double clicking on the song's title.

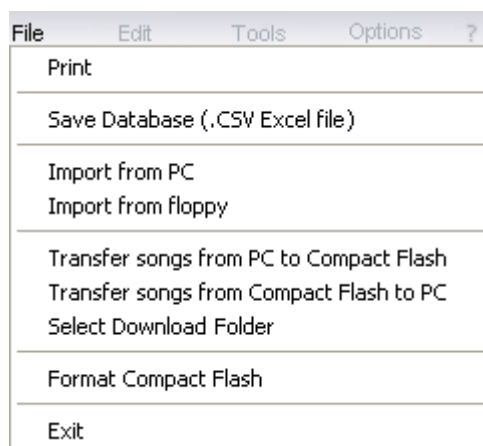




[www.okyweb.com.au](http://www.okyweb.com.au)

Opens Windows<sup>®</sup>' default browser and, if a Web connection is available, automatically connects it to the the **HitTrax/OkyWeb2** web site, where you can download new **OkySoft2** releases, updates for the **OkyWeb2** operating system, manuals and various documents.

## Menu

### File Menu




<b>Print</b>	Allows to print the list of songs. When this function is enabled, the Windows® “print” window appears, in which you can choose whether to print the list of the Download Folder or that of the Compact Flash card.
<b>Save Database</b>	Exports the list of songs in a format that can be used with MS-Excel®, MS-Word®. N.B.: the file saved is a “limited fields database” type – with 5 fields: Index; File name; Title; Artist; Genre. When this function is enabled, Windows®’ “save” window appears, in which you can choose whether to export the list of the Download Folder or that of the Compact Flash card.
<b>Import from PC</b>	Allows to transfer songs contained on the PC’s Hard Disk to the Download Folder.  This function can also be enabled by means of the  function bar key.
<b>Import from Floppy</b>	Allows to transfer songs contained on the PC’s Floppy Disk to the Download Folder.  This function can also be enabled by means of the  function bar key.
<b>Transfer songs from PC to Compact Flash</b>	Copies the selected songs (in the top window) from the Hard Disk to the Compact Flash card.
<b>Transfer songs from Compact Flash to PC</b>	Copies the selected songs (in the bottom window) from the Compact Flash card to the Hard Disk.
<b>Select Download Folder</b>	Allows to set the reference folder for transferring songs from <b>OkkyWeb2</b> to the PC.
<b>Format Compact Flash</b>	Formats the Compact Flash card inserted in <b>OkkyWeb2</b> (or in the <b>OkkyWrite</b> drive). N.B.: <b>OkkyWeb2</b> is compatible with <CF> <b>CompactFlash™</b> specifications and has been successfully tested with a vast number of Compact Flash cards manufactured by various companies. Nevertheless, <b>M-Live</b> declines all responsibility for any faulty operation or loss of data with Compact Flash cards other than those sold with the <b>M-Live</b> brand. In order to be used with <b>OkkyWeb2</b> , Compact Flash cards must firstly be appropriately formatted. Alternatively, use <b>OkkyFlash</b> pre-formatted Compact Flash cards, tested and guaranteed by <b>M-Live</b> . <b>ATTENTION:</b> when formatting is carried out, all the contents of the Compact Flash card will be irreparably deleted ! N.B.: to avoid accidental formatting, enabling is preceded by a prompt for confirmation.
<b>Exit</b>	Exits the program.



**Edit Menu****Find**

Enables a search among the songs available.

This function can also be enabled by means of the  function bar key.

**Select all songs on PC**

Simultaneously selects all the songs contained in the Download Folder (top window).

**Select all songs not present on Compact Flash**

Simultaneously selects all the songs contained in the Download Folder (top window), but not contained in the Compact Flash card (bottom window).

In fact, this means all the songs without the sign ✓

In this way, you can easily select and transfer only songs not yet saved on the Compact Flash card, avoiding duplicates.

**Select all songs not present on PC**

Simultaneously selects all the songs contained in the Compact Flash card (bottom window), but not in the Download Folder (top window),

In fact, this means all the songs without the sign ✓

In this way, you can easily select and transfer only songs not yet saved on the Hard Disk, avoiding duplicates.

**Edit Info**

Allows to display and edit song information.

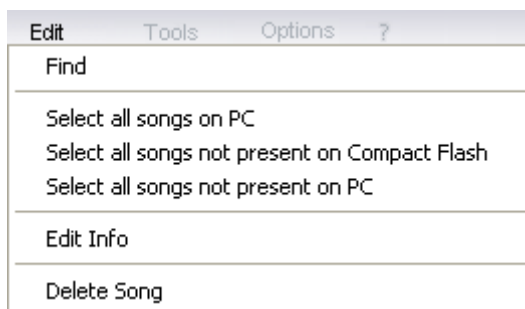
When you select this function, a window is enabled in which you can edit or enter the song's parameters: Title, Artist, Genre, Publisher and Composer.

This function can also be enabled by means of the  function bar key.

**Delete Song**

Deletes the selected songs.

This function can also be enabled by means of the  function bar key.



## Tools Menu

**Play - Stop** Allows to start and stop the playback of the selected song.

Functions can also be enabled by means of the keys

Play and Stop



### MIDI Player settings

Allows to set the device used to play the songs.

You can use Windows® ' default MIDI Player or **OkWeb2** directly. To play a song in **MF5** format, **OkWeb2** must be set.

### MIDI Mixer

Enables the graphic editor of the MIDI Mixer, by means of which you can control the tracks of the song selected. This is the equivalent of the **OkWeb2 EDIT** function. The editor can also be enabled by means of the toolbar key of the same name.

### Microphone Equalizer

Enables the graphic editor of **OkWeb2's MIC EQ**.

The editor can also be enabled by means of the toolbar key of the same name.

### Microphone Echo

Enables the graphic editor of **OkWeb2's MIC ECHO**.

The editor can also be enabled by means of the toolbar key of the same name.

### Music Equalizer

Enables the graphic editor of the **EQ/3D** of **OkWeb2's MUSIC EFX**.

The editor can also be enabled by means of the toolbar key of the same name.

### Music Chorus

Enables the graphic editor of the **CHORUS/EFX2** of **OkWeb2's MUSIC EFX**.

The editor can also be enabled by means of the toolbar key of the same name.

### Music Reverb

Enables the graphic editor of the **REVERB/EFX1** of **OkWeb2's MUSIC EFX**.

The editor can also be enabled by means of the toolbar key of the same name.

### Optimize Compact Flash

Allows to re-order the contents and/or correct any faults on the Compact Flash card, which can occur after incorrect operations (for example, the removal of a Compact Flash card during song transfer).

N.B.: **OkWeb2** is normally able to recognize any faults on a Compact Flash card and suggest its optimization. You can however carry out this procedure when you think it is necessary: the operation normally allows the functions of Compact Flash cards to be perfectly restored and the songs on them completely recovered.

The length of the operation depends on the capacity of the Compact Flash card and the quantity of data stored on it: in certain cases, several minutes may be necessary.

### Playlist

Allows to easily handle the Playlists of the Compact Flash card inserted in **OkWeb2** (or the card drive - e.g. **M-Live OkWrite**).

This function can also be enabled by means of the  function bar key.

### Update OkWeb2 Operating System

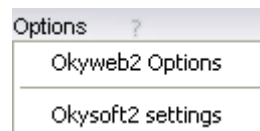
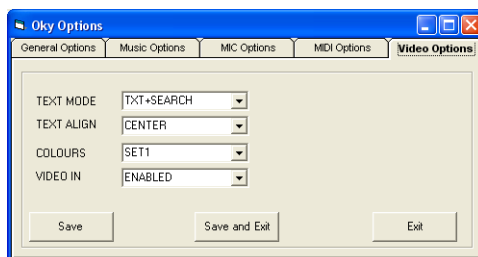
Runs the procedure that allows you to always keep your **OkWeb2** updated after you buy it.

N.B.: you can check which version is installed in your **OkWeb2** by reading the display when the unit is switched on, or accessing the main page in the OPTIONS menu.

Tools	Options	?
Play		
Stop		
MIDI Player settings		
MIDI Mixer		
Microphone Equalizer		
Microphone Echo		
Music Equalizer		
Music Chorus		
Music Reverb		
Optimize Compact Flash		
Playlist		
Update Okweb2 Operating System		

## Options Menu

**OkkyWeb2 Options** Allows to easily set all the options of **OkkyWeb2's** Option menu.



Change the parameters using the corresponding pull-down menus. Remember that the options are saved on the Compact Flash card: they can therefore vary from one Compact Flash card to another.

N.B.: for information on Option parameters, you can consult the **OkkyWeb2** manual.

**OkkySoft2 settings** Enables a window in which you can set some of the program's parameters.

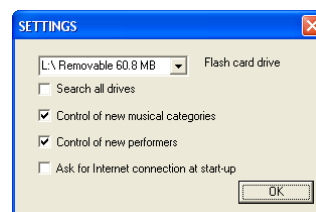
### Flash Card Drive

Sets the drive (e.g. **OkkyWrite**) for Compact Flash cards used by the program.

N.B.: if the drive is not indicated correctly, some faulty operation may occur with **OkkySoft2** or the computer.

### Check new Genres / new Artists

Enables a check during the entering of data in the Edit Info window. The program warns if the genre or artist entered is not contained in **OkkySoft2's** Database.

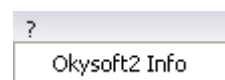


### Request connection at start-up

Automatically enables the request for a connection to the [HitTrax/OkkyWeb2](http://HitTrax/OkkyWeb2) web site when the program is started.

## ? Menu

**Information on OkkySoft2** Provides general information on the program and the version currently installed.



## Editors of the Processors and MIDI Mixer



The bar's keys allow to rapidly enable/disable the graphic editors of the **OkyWeb2** processors and MIDI Mixer. The same functions are also available in the Tools menu.

Each key has a LED, which shows the editor status:

- LED off = editor disabled
- Green LED = editor enabled with processor in ON status (enabled)
- Red LED = editor enabled with processor in OFF status (bypass)

N.B.: the MIDI Mixer doesn't use this last function

**IMPORTANT:** remember that **OkySoft2** graphic editors are simply remote controls. The real processors are physically contained in **OkyWeb2**. For this reason, when **OkyWeb2** is not connected, the editors are disabled.

### Common operating modes

Each editor obviously contains the specific control tools for the relative processor. Nevertheless, the operating principles and control interface are identical in all the editors. By means of the editors, you can create and manage entire custom preset libraries, which can be used with all songs. The MIDI Mixer, on the other hand, directly changes the parameters of a specific song.



#### Load Preset

Allows to load a preset.  
According to whether PC or **OKYWEB2** is selected, the search for the preset to upload is run in the PC's Hard Disk or in **OkyWeb2's** Compact Flash card.  
Standard Windows® operating modes are used.

The name of the preset uploaded appears in the Presets window.

Any changes to the preset after having uploaded it are indicated by the appearance of an asterisk added to the name.



#### Save Preset

Allows to save a preset with the processor's current settings.  
According to whether PC or **OKYWEB2** is selected, the preset can be saved on the PC's Hard Disk or **OkyWeb2's** Compact Flash card.  
Standard Windows® operating modes are used.

The name of the saved preset appears in the Presets window.

Any changes to the preset after having uploaded it are indicated by the appearance of an asterisk added to the name.



#### ON/OFF

Allows to enable/disable the processor.  
This apparently uninteresting function in fact turns out to be very useful during the procedure for fine-tuning and perfecting the song, as it allows you to very easily carry out comparisons between the processed and the unprocessed signal and to enable on each occasion only the required processors for best assessing the effects.



### Potentiometers

Control of the various types of potentiometers (vertical and horizontal faders, rotary pots) is carried out by clicking and keeping the mouse button pressed on the required element and dragging the mouse. The value of the change is indicated in real time. Releasing the mouse button fixes the element's new value.



### Other controls

The use of other controls is quite intuitive and is carried out by clicking on arrows or other self-explanatory indicators or clicking directly on the value shown.

For example, to change the MIDI Mixer's Status parameter, just click on the value to change it in PLAY, MUTE, Semi-Mute and Solo and then repeat the cycle from the beginning.



### Grey elements

Elements and values shown in grey (whether they are single parameters or entire processors), are temporarily disabled elements, so are temporarily unable to be edited.

In the processors, this disabling can depend on the ON/OFF key and in the MIDI Mixer by the fact that the track is not used by the selected song.



### Closing the editor

The editor can be immediately closed by clicking on the small X icon, or by clicking once again on the relative key of the editor bar.



## MIDI MIXER

The MIDI mixer is the remote control of **OkkyWeb2** EDIT function and allows to immediately control all the main parameters for playing a specific song.

To enable the MIDI Mixer:

- ☞ Select the required song.  
N.B.: it is necessary to select a song since, as opposed to the editors of the various processors (which affect the effects and equalizers realizing adjustments and presets that can be used by several songs), the MIDI Mixer has a directly exclusive effect on the parameters of a specific song.

- ☞ Click on the **Mixer** button of the editor bar, or enable the MIDI Mixer function of the Tools Menu.

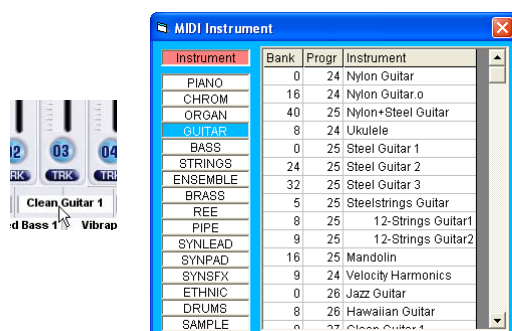
For a detailed description of the individual parameters, refer to the "EDIT" chapter in the **OkkyWeb2** Manual.

As far as the MIDI Mixer is concerned, the following particularities should be noted:



## Changing the instrument of the track

- ☞ Click on the name of the instrument assigned to the track.
- ☞ In the window that appears, choose the required family of instruments.
- ☞ If necessary, scroll the list of instruments belonging to the family, then double click on the name of the required instrument.



## Selecting tracks 17-32 in MF5 files

Songs in MF5 format have a series of extra data compared to MIDI standards. Among the most outstanding characteristics are 32 MIDI tracks (compared to the 16 of normal MIDI Files).

- ☞ To access editing of tracks 17-32, click on the small selection arrows.



N.B.: selection of tracks 17-32 is automatically disabled for the songs that do not have a 32-track structure.

## Saving changes

- ☞ Press **SAVE** to save the changes to the selected song.

## OkkyWeb2 Player

The **PLAY** and **STOP** keys allow to play the song using **OkkyWeb2** and thus listen to the result of the editing carried out with the MIDI Mixer.



N.B.: the **MIDI Mixer's Player** only plays the songs with **OkkyWeb2**. So, if **OkkyWeb2** is not connected, you can change and save the songs contained in the PC's Download folder, but cannot listen to results with the MIDI Mixer. You can eventually play them by means of Windows<sup>®</sup> default Player, using the **PLAY** and **STOP** keys of the main window of **OkkySoft2**. However, remember that many **parameters, effects and sounds are exclusive to OkkyWeb2**: therefore, using other playback systems, the results could be a lot different and not always reliable.

## MIC ECHO

MIC ECHO is the remote control of the ECHO dedicated to **OkkyWeb2's** microphone.

### ECHO TYPE

Allows to choose the type of Echo:

**MONO ECHO**

**STEREO ECHO**

**TRIPLE ECHO**

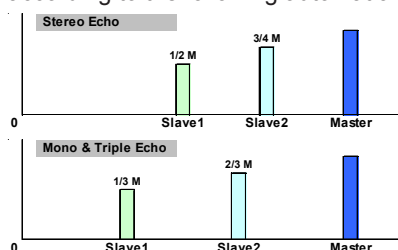
### MASTER DELAY TIME

**The main delay time.**

Corresponds to **OkkyWeb2's** EchoTIME parameter and allows to edit the time of the effect's Master repetition.

In fact, it makes the Echo longer or shorter.

Slave1 and Slave2 repetition times (fractions of the master time) Depend on the Master repetition time, according to the following automatic table:



N.B.: Slave repetitions are therefore "heard" before the Master repetition.

E.g. Master Delay Time = 120 ms

Stereo Echo: Slave1 = 60 ms; Slave2 = 90 ms

Mono and Triple Echo: Slave1 = 40 ms; Slave2 = 80 ms

### DELAY LEVELS

**Volumes of the repetitions.**

### FEEDBACK

**Regeneration of the delayed signal.**

In other words, sets the effect's persistence.

### L.P. FILTER

**The Feedback's low-pass filter.**

Controls the cut of the high frequencies in the regenerated signal.

### SYNCtoMIDI

**Echo synchronization mode.**

This control allows to synchronize the Echo's repetitions with the tempo of the song being performed.

In other words, it allows to have an Echo able to "keep time" with any backing track.

This control's setting considerably changes the effect's behaviour.

If disabled (LED off), the values of the repetitions are set by the Master Delay Time control.

The repetitions of the Echo operate with fixed values, no matter what the tempo of the songs.

If enabled (green LED), repetitions are synchronized with the tempo of the song being performed.

The repetitions of the Echo follow the effective performance tempo of each song, including variations.

### Synchronization value.

Corresponds to the **OkkyWeb2** SYNCto parameter and allows to indicate the value of the music note with which the Echo's repetitions are to be synchronized:

The note values are subject to some automatic optimisation, to avoid synchronization times that are unsuitable from a musical point of view.

### SEND

**The microphone signal sent to the Echo effect.**

Adjusts the amount of microphone signal sent to the effect.

N.B.: the SEND control is the exact equivalent of an effect send on a normal audio mixer and must not be confused with the volume of the effects, which on the other hand is adjusted with the MIC EFX pot on the right-hand side of **OkkyWeb2**.



## MIC EQ / MUSIC EQ

MIC EQ and MUSIC EQ are the remote controls of the respective **OkkyWeb2** equalizers.

The parameters are almost identical – the only difference is the 3D Depth control, only on Music EQ.

### 3D DEPTH (only Music EQ)

Adjusts the depth of the spatialization effect on the sound of the backing track.

### EQ TYPE

Allows to choose the configuration of the equalizer:

**4-BAND PARAMETRIC**

**4-BAND GRAPHIC**

**3-BAND GRAPHIC**

**3-BAND + MID Freq**

### GAIN

The **Gain** controls work with an amplitude of  $\pm 12\text{dB}$  and allow to boost or cut the respective frequencies.

E.g.: LOW = -6dB is equivalent to halving the volume of the Low frequencies.

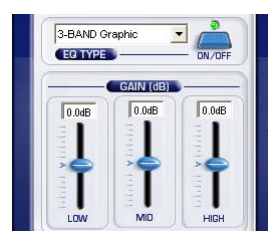
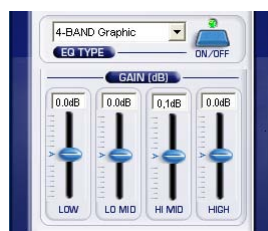
### FREQ

The **FREQ** controls of the bands establish the frequencies affected by the respective **GAIN** controls.

In other words, using a **FREQ** control moves the frequency range that will be adjusted with the **GAINS** control.

### WIDTH

The **WIDTH** controls establish the width (in octaves) of the frequency band affected by the respective **FREQ** and **GAIN** controls.



## CHORUS FX

CHORUS FX is the remote control of the CHORUS effect of **OkkyWeb2's** MUSIC EFX.

### CHORUS TYPE

Allow to choose the type of effect from a list corresponding to that of General MIDI CHORUS:

CHORUS 1  
CHORUS 2  
CHORUS 3  
CHORUS 4  
FEEDBACK  
FLANGER  
SHORT DELAY  
FB DELAY

### PRE-L.P.

**Pre-delay low-pass filter.**

Controls the cut of the high frequencies in the signal before it is processed by the effect.

In fact, it makes the sound more or less bright.

### DELAY

**Delay time.**

Establishes the time that the effect waits before processing the signal.

### FEEDBACK

**Regeneration of the signal.**

Establishes the effect's persistence.

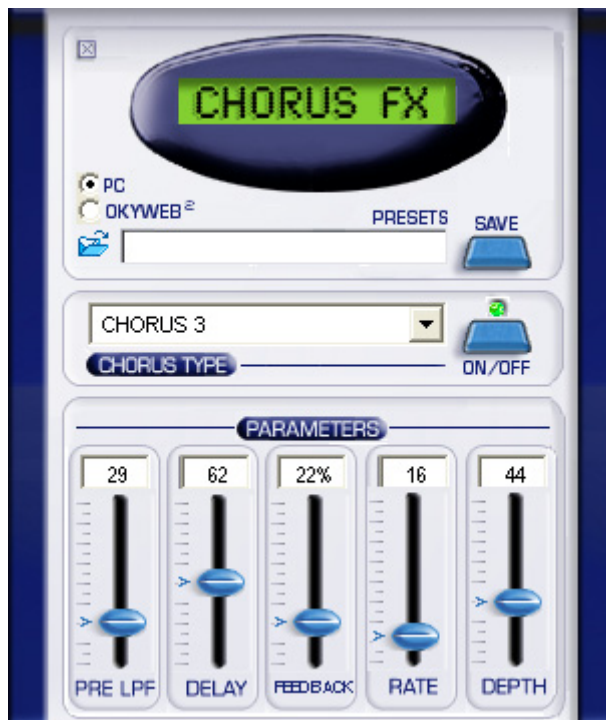
### RATE

**Modulation speed.**

### DEPTH

**Modulation depth.**

In fact, controls "how much" the effect affects the sound.



## REVERB FX

REVERB FX is the remote control of the REVERB effect of OkyWeb2's MUSIC EFX.

### REV TYPE

Allow to choose the type of effect from a list corresponding to that of General MIDI REVERB:

ROOM 1  
ROOM 2  
ROOM 3  
HALL 1  
HALL 2  
PLATE  
DELAY  
PAN DELAY

### L.P. FILTER

**Low-pass filter.**

Controls the cut of the high frequencies in the signal before it is processed by the effect.

In fact, it makes the sound more or less bright.

### CHARACTER

Establishes the effect's *sound texture*.

### REV TIME

**Reverberation time.**

In fact, establishes how long the effect lasts.

**FEEDBACK** (only available with Delays)

**Regeneration of the signal.**

Establishes the effect's persistence.







**M-LIVE s.r.l.**

Via Luciona, 1872/B  
47842 S.Giovanni in Marignano (RN) - ITALY  
Phone +39 0541 827 066 - Fax +39 0541 827 067  
web: [www.m-live.com](http://www.m-live.com) - e-mail: [export@m-live.com](mailto:export@m-live.com)

**HitTrax MIDI Files**

PO Box 6090  
Vermont South 3133  
Vic, Australia  
Ph/Fax: +613 9887 8127  
web: [www.okyweb.com.au](http://www.okyweb.com.au) - e-mail: [info@okyweb.com.au](mailto:info@okyweb.com.au)

